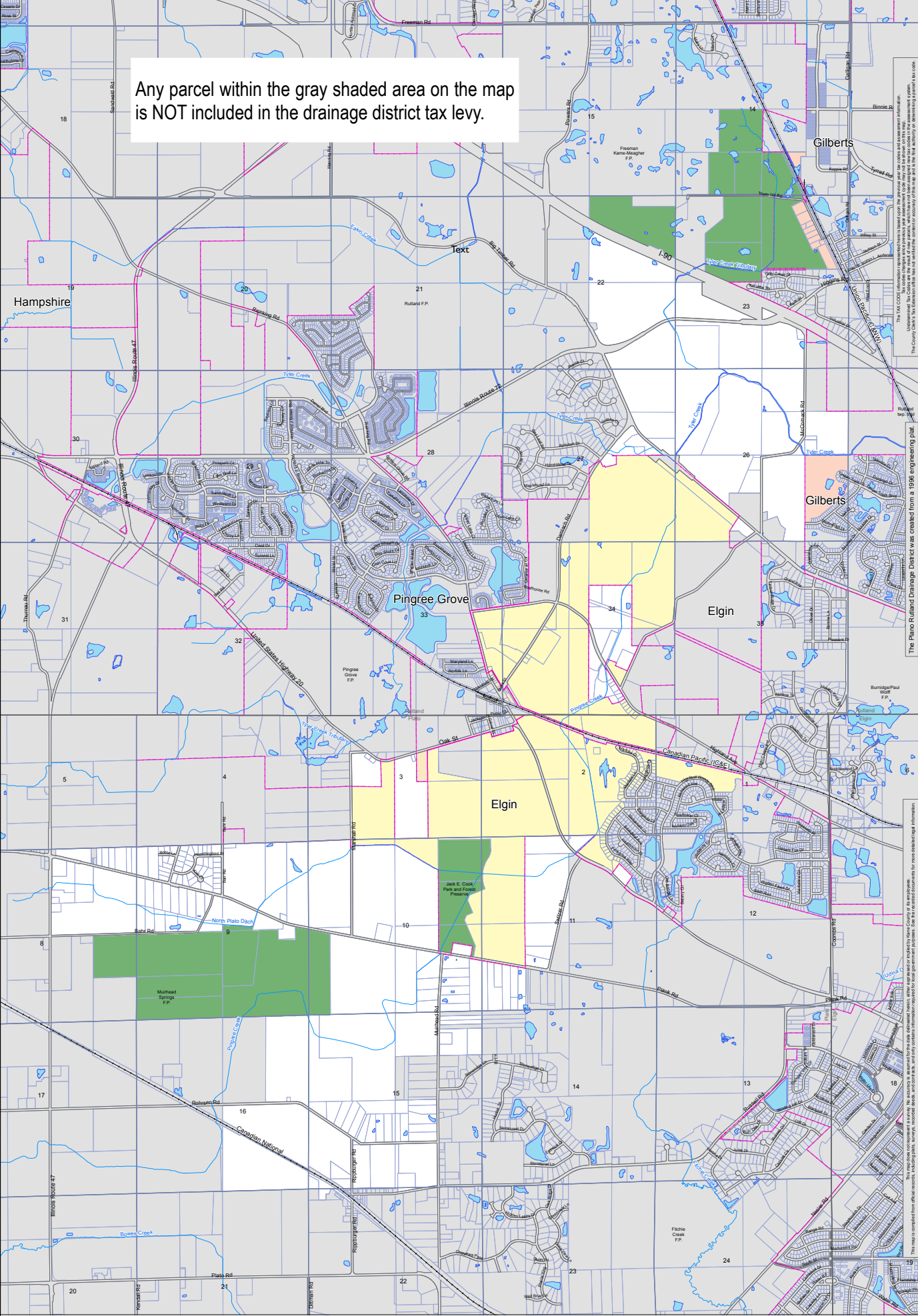


Any parcel within the gray shaded area on the map is NOT included in the drainage district tax levy.



The Plato Rutland Drainage District was created from a 1996 engineering plat.

The TAX CODES shown on this map are for information only. The County Clerk's Office does not warrant the accuracy of the information shown on this map. The County Clerk's Office is not responsible for any errors or omissions on this map.

This map is compiled from official records, including plat, survey, record book, and other available information. The County Clerk's Office is not responsible for any errors or omissions on this map.

Kane County
GIS Technologies

2024-2025
1000 N. Lincoln Ave.
Springfield, IL 62761

Phone: (618) 244-8888
Fax: (618) 244-8889
Email: gis@kane.org

Legend	
	ROW
	Rail Roads
	Creeks
	Water
	Municipalities
	Forest Preserves
	Parcels
	No Drain
	Township
	Sections



Plato Rutland Drainage District - 1996
Kane County, Illinois

